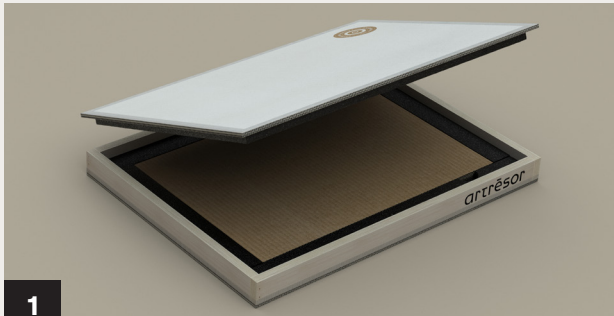


artresor

Easy step by step packing guide

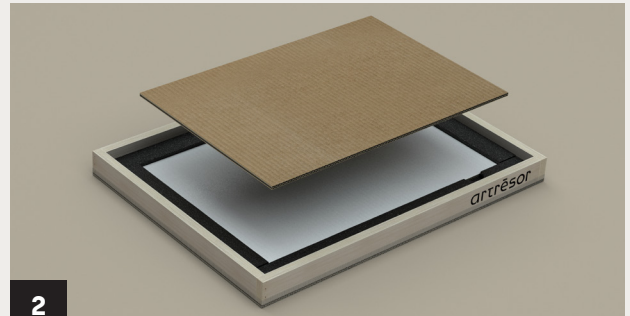
FOR PRINTS



1

Take the top lid off and put it next to your box

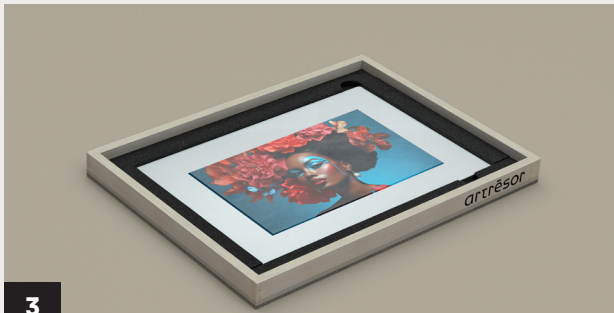
Save the small transparent bag with screws for the last step (closing of the lid)



2

Take off the first cardboard layer

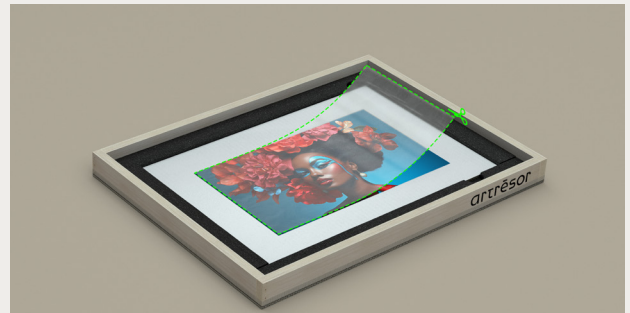
Leave the second cardboard layer in place
Save the folded paper corners and the glassine paper for the next steps



3

Cut the glassine paper and put it then on top of the print

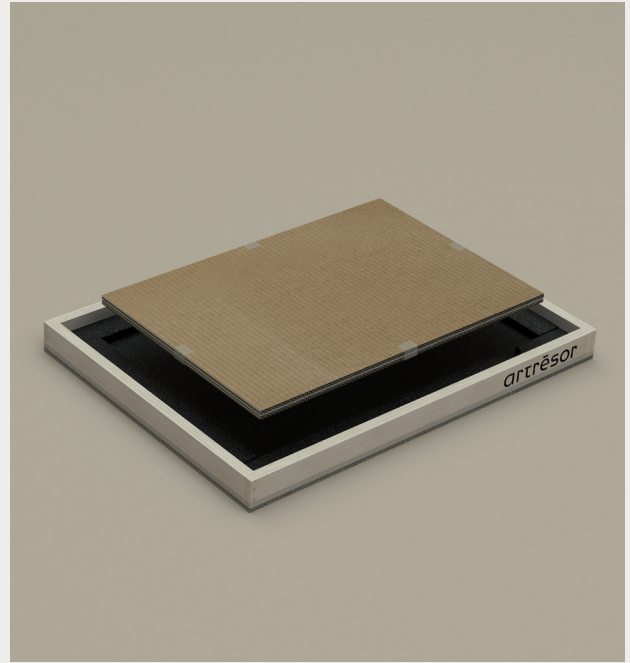
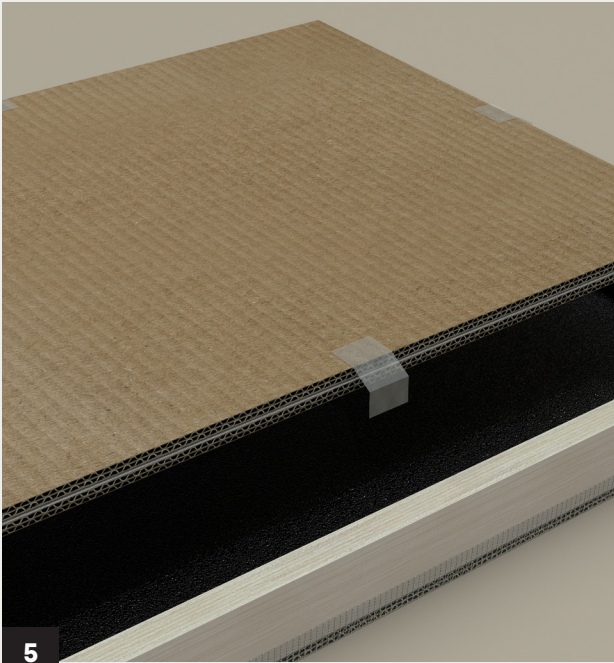
- 1 Cut the glassine to the size of your print
- 2 Put the cutted glassine paper on top of your print



4

Place & tape the folded paper corners

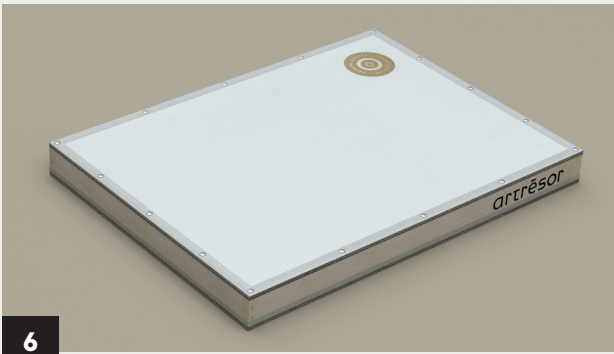
- 1 Slide the corners over the print and the glassine paper (be careful not to damage the print!)
- 2 Tape the corners to the cardboard on it's long sides. Don't let the tape touch any part of the print or glassine paper.



Place & secure the second cardboard layer

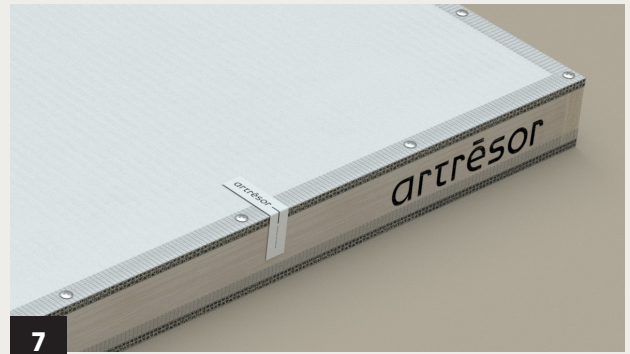
- 1 Put the 2nd cardboard layer on top of the print
- 2 Tape the two cardboard layer together

One tape on each side is enough to secure the print and keep the unboxing uncomplicated. We recommend you use easy to cut paper tape.



Secure the lid

- 1 Put the lid on
- 2 Put the screws in place, starting at the corners, and then equally divided throughout the sides of the box.



Seal the lid

Place the sealing sticker as shown in the example

Congratulations!

Your artwork is firmly secured and will endure the harshest conditions during shipping. You are ready to ship your printed artwork.

artresor

www.artresor.art
support@artresor.art

