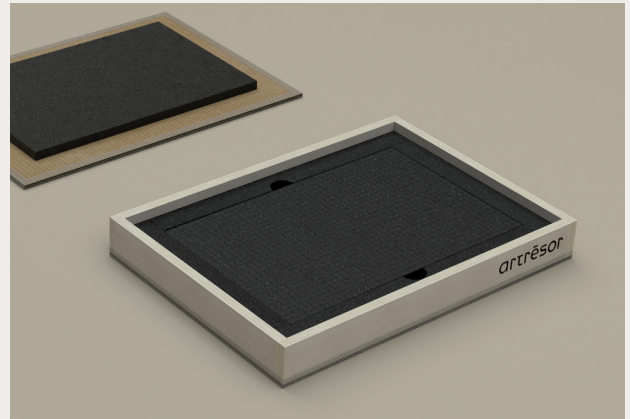
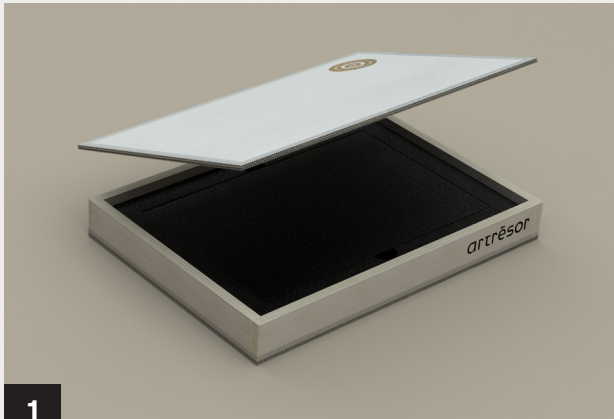


# artresor

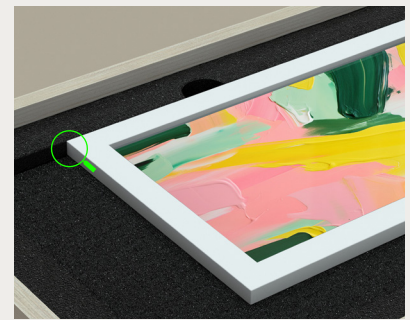
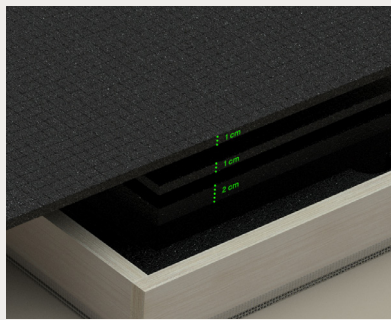
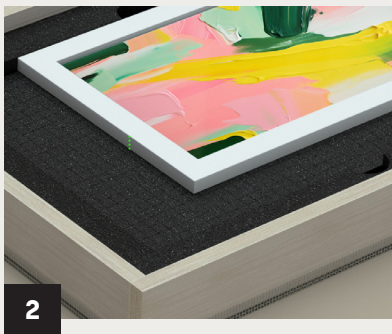
Easy step by step packing guide

## FOR FRAMED WORKS



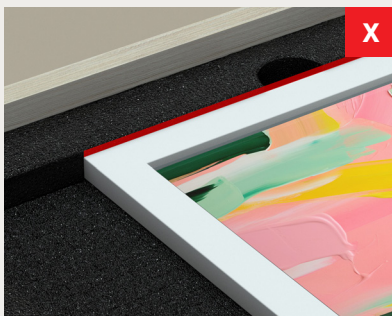
**Take the top lid off and put it next to your box**

Save the small transparent bag with screws for the last step (closing of the lid)

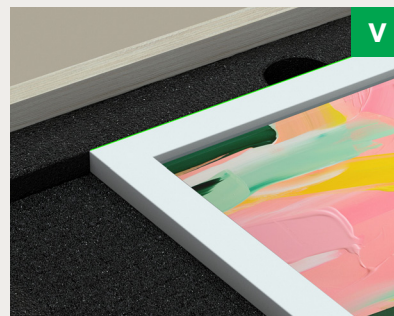


**Fill up the height of the open space to fit the thickness of your framed artwork**

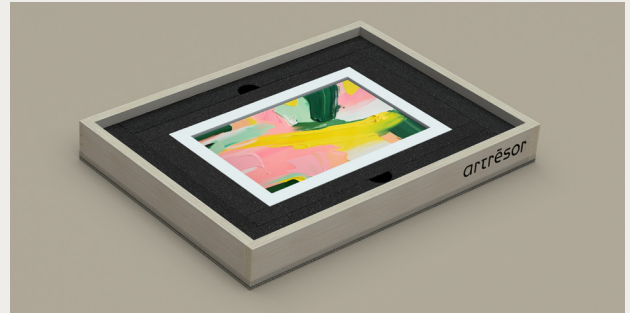
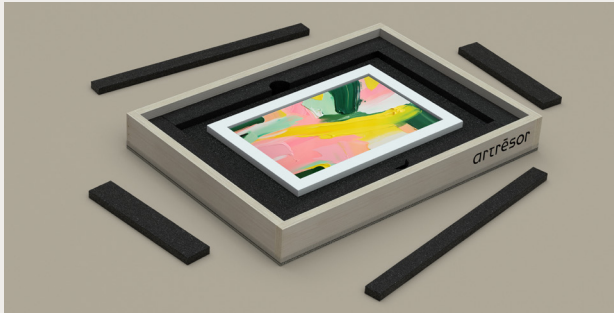
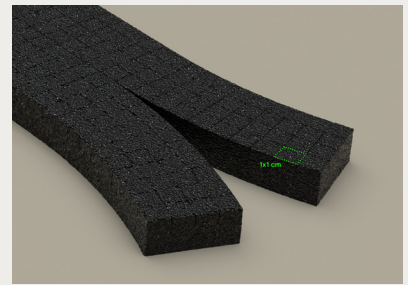
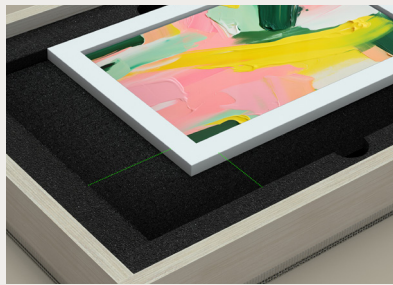
- 1 Measure the thickness of your framed artwork
- 2 Use the foam layers to fill up the box
- 3 Ensure your artwork sits flush (or a few mm's higher) than the top of the foam.  
E.g. Frame thickness = 2cm. Use 2x 1cm foam layer.  
E.g. Frame thickness = 3,3cm. Use 1x 1cm foam layer.



The red line indicates that the frame is lower than the top of the foam. This way there's space for the artwork to move during transit and will cause damage.



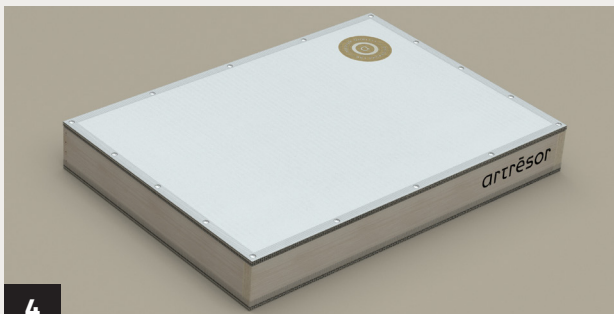
The top of the frame sits flush with the foam. This way there's no space for the artwork to move during transit.



### Fill up the space around your framed work

- 1 Put the frame in one corner
- 2 Measure the empty space on both sides of the frame. Round up your measurements to the higher full cm's. (e.g. 14.6cm = 15cm)
- 3 Divide the measurements by 2 to fit your artwork in the center of the box.
- 3 Tear the foam to the right size.
- 4 Fill up the empty spaces on each side of your framed artwork

*In case the 1x1cm strips don't fill up the space nicely you can also choose to position the frame in the corner.*



### Secure the lid

- 1 Put the lid on
- 2 Put the screws in place, starting at the corners, and then equally divided throughout the sides of the box.

### Seal the lid

Place the sealing sticker as shown in the example

## Congratulations!

Your artwork is firmly secured and will endure the harshest conditions during shipping. You are ready to ship your framed artwork.



artresor

[www.artresor.art](http://www.artresor.art)  
[support@artresor.art](mailto:support@artresor.art)